

Inline Chlorine/Bromine Tablet Feeder Auto Chlorinator, Specifically Designed For Variable Speed Pump Applications

This unit is referred to below as a “feeder” and a “chlorinator.”

READ ALL INFORMATION BEFORE PROCEEDING WITH ANY INSTALLATION. THE INFORMATION WILL HELP YOU INSTALL YOUR FEEDER PROPERLY AND AVOID PROBLEMS.

The Clean Pro VS feeder comes with the VS Low Flow Inlet, Cone and Outlet pre-installed. These are for systems with 2-speed or variable speed pumps where the system flow is less than 50 gpm at the lower speed. If the system uses only a single speed pump, or the low speed is over 50 gpm, remove the inserts.

INSTALLATION GUIDELINES

- Make sure all pumps and timer switches are OFF. The feeder is designed for permanent installation in the return line of the pool or spa and must always be installed after the heater, pool cleaner, valves, filter and all other equipment. Feeder should be installed above the water level. IMPORTANT: Heaters and other equipment may be damaged by highly chlorinated water. Use a chemical resistant check valve before the feeder.
- If the pool/spa is plumbed with 2" PVC pipe make sure the pump, heater and filter all have 2" inlet and outlet fittings. Chlorinator has 2" unions (6b) on both ends. The unions will be glued on both sides of the pipe. Then the chlorinator can be installed by tightening the union nuts onto each side of the chlorinator. When using 1.5" PVC pipe, follow instructions above but glue into 1.5" unions (6d).
- When plumbing a pool/spa combo where the plumbing and equipment is 2" PVC and the feeder is installed on the pool return line *after* the diverter valve with a portion of the water going to the spa, install a minimum section of 6" x 1.5" PVC pipe directly into the inlet side of the feeder using the 1.5" unions. Continue with 2" PVC pipe on the outlet side of the feeder. This will compensate for the water being diverted.
- When plumbing 90 degree elbows directly into the feeder inlet it may cause turbulence inside the elbow which prevents water from entering the feeder. A minimum of 6" PVC pipe should be installed between the elbow and the inlet of the feeder.

- The arrows on feeder Inlet and Outlets should point in the direction of the water flow *returning* to the pool/spa.
- Use only PVC cement. Follow the directions on the cement label. Allow time for the PVC cement to completely dry.
- A chemical resistant check valve must be installed in between the chlorinator and the heater.
- Go to www.argpool.com for more installation suggestions.

OPERATING INSTRUCTIONS

Fill the feeder with water making sure to bleed out any entrapped air in any of the lines. To ensure maximum effectiveness, before starting the feeder the pool should be properly conditioned and the residual should be 1.0 to 1.5 ppm. Consult your local dealer for water conditioning information in your area.

1. Remove cap of feeder and fill with proper size tablets. For pools use 1" or 3" diameter tablets. For spas use 1" tablets.
2. Completely fill the chlorinator with water. Replace cap making sure o-ring is clean, lubricated and in place.
3. Turn on pump and timer switches for a minimum of 6 to 8 hours. The water level inside the chlorinator will be 3-5 inches under normal running conditions.
4. Adjust the control valve clockwise for less chemical or counterclockwise for more chemical according to the size of the pool/spa. Use a test kit to determine the chemical residual. Check the chemical residual be checked daily for the first five days. NOTE: Hot weather, high water temperature and increased use will cause the pool/spa to use more chemicals. Increase the feed rate a few days in advance when possible. The valve settings may require adjustment depending on the conditions. It may be necessary to add more chemicals by hand.

RECHARGING THE FEEDER

1. Turn control valve to the closed position (clockwise). SHUT OFF PUMP.
2. Wait one minute allowing the water and fumes to drain from the feeder.
3. Leave the control valve closed OFF and turn on the pump. (The check valve will prevent water from entering the feeder.)
4. Remove cap and fill with tablets.
5. Replace cap making sure o-ring is clean, lubricated, and in place. (Hand tighten only.)
6. Open control valve (clockwise) to original setting.

WINTERIZING THE FEEDER

This chlorinator has unions for easy draining of the unit for winter. Untighten the unions to remove chlorinator to empty water. Follow other normal procedures for your system to winterize.

SPECIAL INSTRUCTIONS - TROUBLESHOOTING

1. If the tablets are not melting or melting slowly:

If using variable speed pump, run pump for at least 6 hours per day at high speed (at least 40 gpm).

If the pump run on low speed 24 hours per day or less than 6 hours per day on high speed, bleed the air while the pump is on by unscrewing the cap knob until water appears, then screw the knob back on, repeat this process each time the cap is removed for any reason.



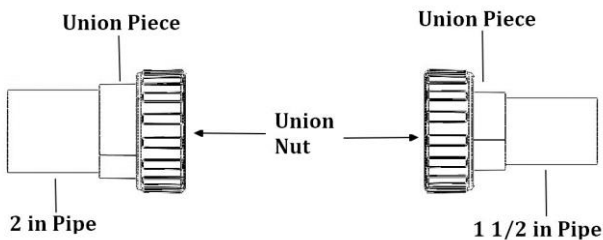
2. If the feeder is still not melting the tablets as desired, switch to 1” tablets for faster erosion and increased residual.
3. The bottom grate (7) inside the bottom of the chlorinator is designed to be removed easily when chlorine is gummed up inside the unit. The chlorine residue must be dislodged or it may affect feeder performance. The grate helps keep pieces of the tablets from clogging the outlet. Be sure to check its position after each recharging as the grate may come out of its resting place when tablets are added to the chlorinator.
4. If the chlorinator uses too much chlorine, remove the 3 pieces of #8.

***WARNING: DANGER! READ CAREFULLY FAILURE TO FOLLOW MAY LEAD TO INJURY OR DEATH**

This feeder is designed to use only Trichlor-a-triazinetrione OR Bromine tablets- slow dissolving type. **UNDER NO CIRCUMSTANCES MIX Trichlor or Bromine with Calcium Hydrochlorite, with other forms of concentrated chlorine or with other chemicals.** FIRE AND/OR EXPLOSION MAY RESULT. NEVER use oils or grease to lubricate o-ring. Oil in contact with Trichlor OR Bromine may result in FIRE. Lubricate o-ring with approved silicone o-ring lubricant only. If you are not the original owner of this feeder, or not sure which chemical was used, be SAFE and flush thoroughly with fresh water. CAUTION SHOULD BE USED WHEN REMOVING CAP. DO NOT INHALE FUMES. IF YOUR POOL OR SPA HAS COPPER PLUMBING DO NOT INSTALL. This will damage the feeder. NOTE: If a heater is used, a fireman switch or equivalent must be installed to prevent possible damage and improper operation of check valve and other equipment subject to heat damage.

Install Guide: For 2 in Pipe

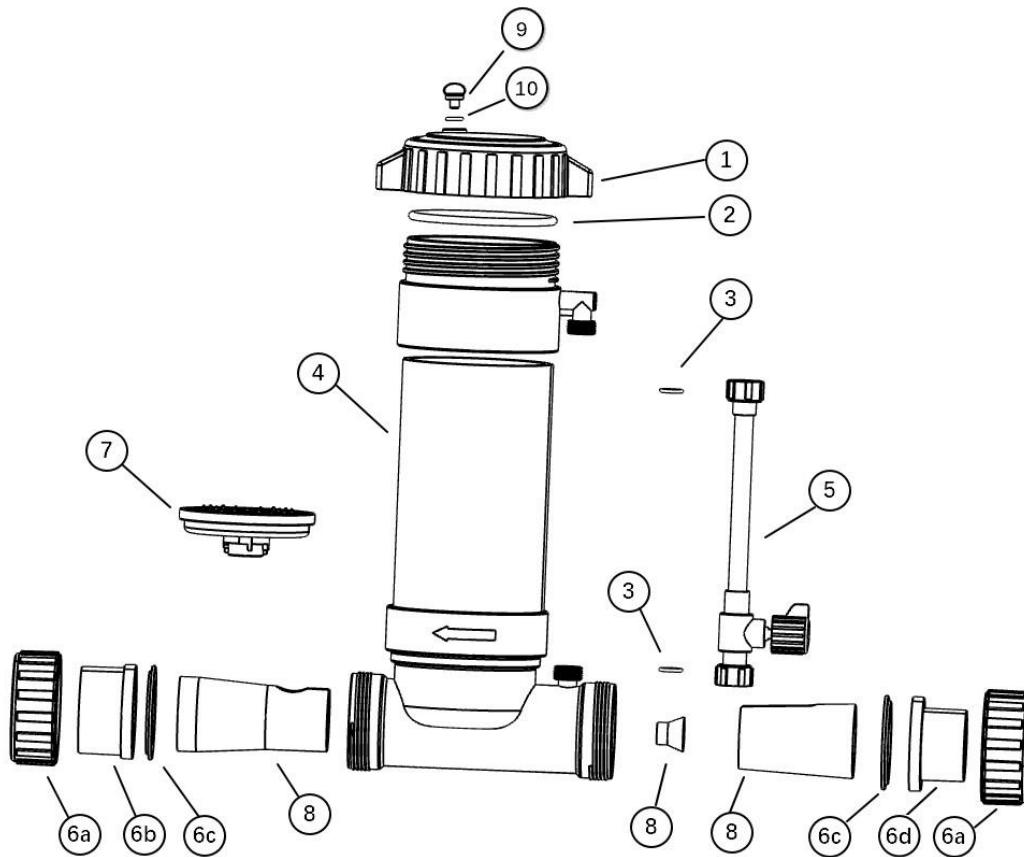
Cut Pipe so Chlorinator will fit.
 Take Nut (6a) slip over 2 in Union Piece (6b) and glue onto end of Pipe. Put gaskets (6c) into Union Pieces and install Chlorinator



For 1-1/2” Pipe,
 Use 1-1/2” Union Pieces (6d)

Parts List:

CleanPro VARIABLE SPEED
AUTOMATIC CHLORINATOR



1 - Lid CIV01

2 - Lid O-ring CIV02

3 - Control Valve Gasket (2) Pieces CIV03

4 - Body N/A

5 - Control Valve and Clear Tube CIV04

6a - Union Nut UT001

6b - 2 in Union Piece UT002

6c - Union gasket UT003

6d - 1 ½ in Union Piece UT015

7 - Grate Check Valve CIV05

8 - Variable Speed Reducers (3)
Pieces CIVSD

9 - Air Bleeder Plug CIVPG

10 - Air Bleeder Plug O-ring CIVOR

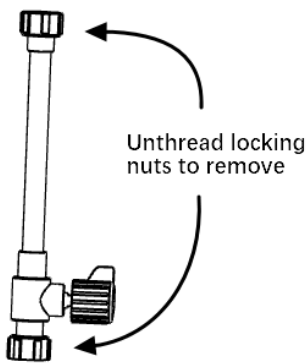


STOCKBRIDGE, GA

CleanPro Chlorinator Service

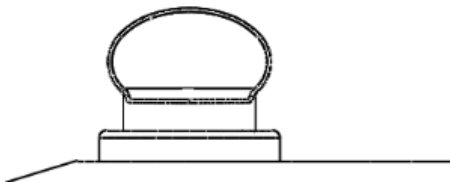
How to replace item #5, control valve/clear tube:

1. Unthread locking nuts to remove.
2. Check to make sure O'rings are in place (top and bottom).
3. Push up on bottom of tube inside nut, should go up 1/4 inch.
4. Put back in place.
5. Tighten nuts by hand.

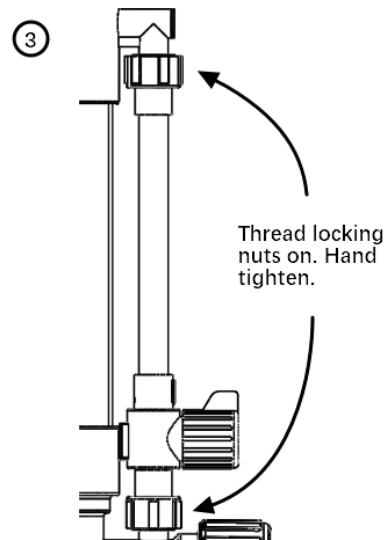
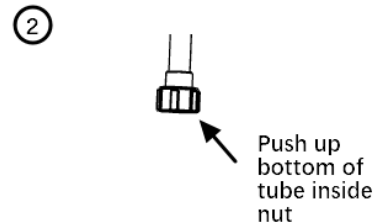
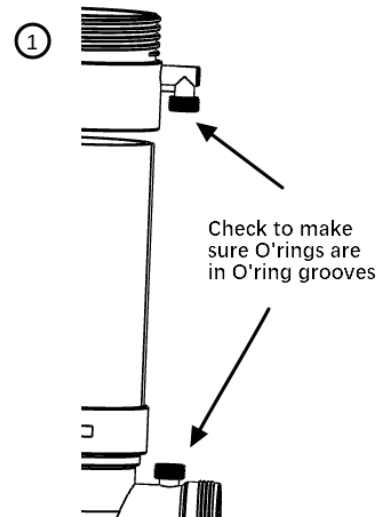


When Starting Pool System

If tablets are not melting or pump is running at low speed for extended periods, bleed air by turning plug on lid while pump is running.



No need to fully remove plug, just loosen. After the air, water will come out, tighten plug.



Pool and SPA Products